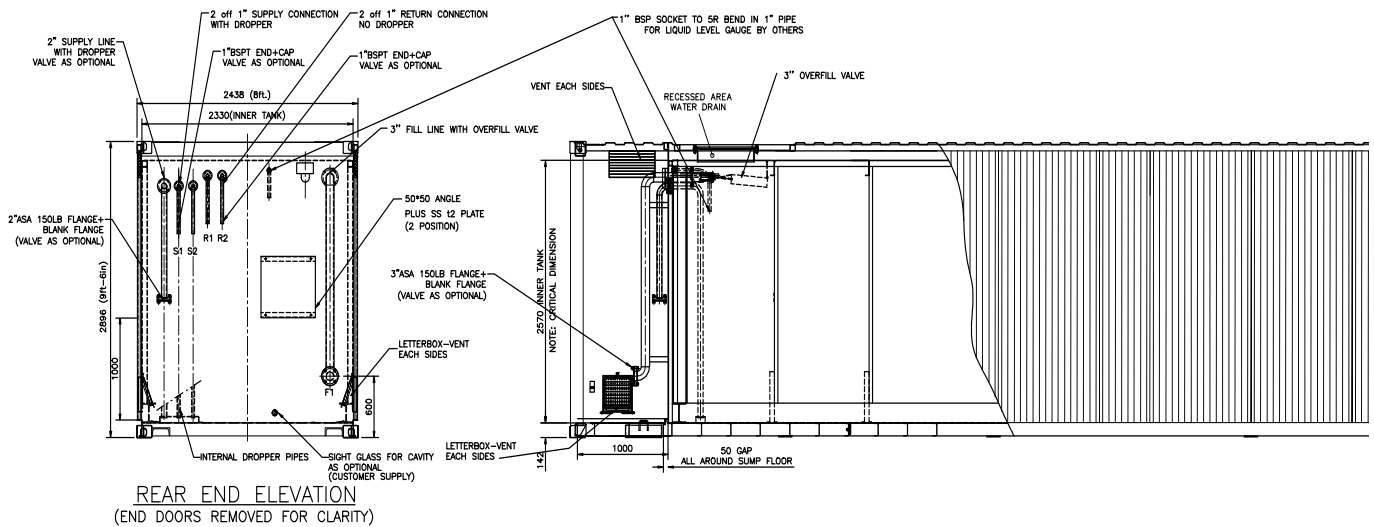


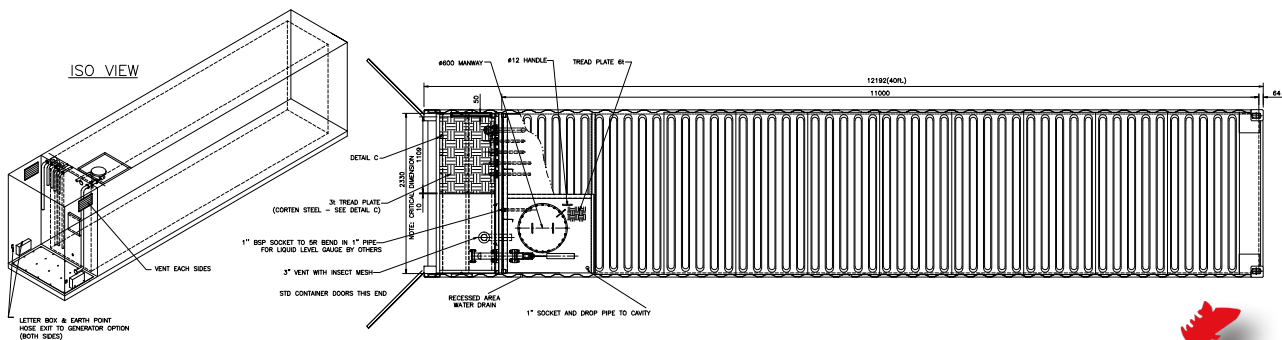
## 64,000L BUNDED FUEL TANK



Fuel Tank shown is indicative and may not be representative of equipment available at the time.

### 64,000L Banded Fuel Tank

Fuel Capacity (L)	Length (mm)	Width (mm)	Height (mm)	Weight Dry (kg)
64,000	12192	2438	2896	15000



The Company reserves the right, prior to the delivery date to substitute the equipment with an alternative providing no less litres than stated above.

**NORTH WEST DEPOT >> T: 01744 419100**

Park Industrial Estate, Gaskell Street, St Helens, WA9 1PX  
[enquiries@stuartgroup.info](mailto:enquiries@stuartgroup.info)

**EAST ANGLIA DEPOT & HQ >> T: 01953 454540**

Stuart House, Hargham Road, Shropham, Norfolk, NR17 1DT  
[enquiries@stuartgroup.info](mailto:enquiries@stuartgroup.info)

**NORTH EAST DEPOT >> T: 01469 551230**

Middleplatt Road, Immingham, DN40 1AH  
[enquiries@stuartgroup.info](mailto:enquiries@stuartgroup.info)

**WEST MIDLANDS DEPOT >> T: 01905 964499**

Diglis Trading Estate, Navigation Road, Worcester, WR5 3DE  
[enquiries@stuartgroup.info](mailto:enquiries@stuartgroup.info)

**24/7 EMERGENCY 365 DAYS A YEAR >> 24/7 SUPPORT 365 DAYS A YEAR >> NATIONWIDE COVERAGE 365 DAYS A YEAR >>**

